

fall / winter 23

**Inspirational Looks
FW 23**



ROY ROBSON

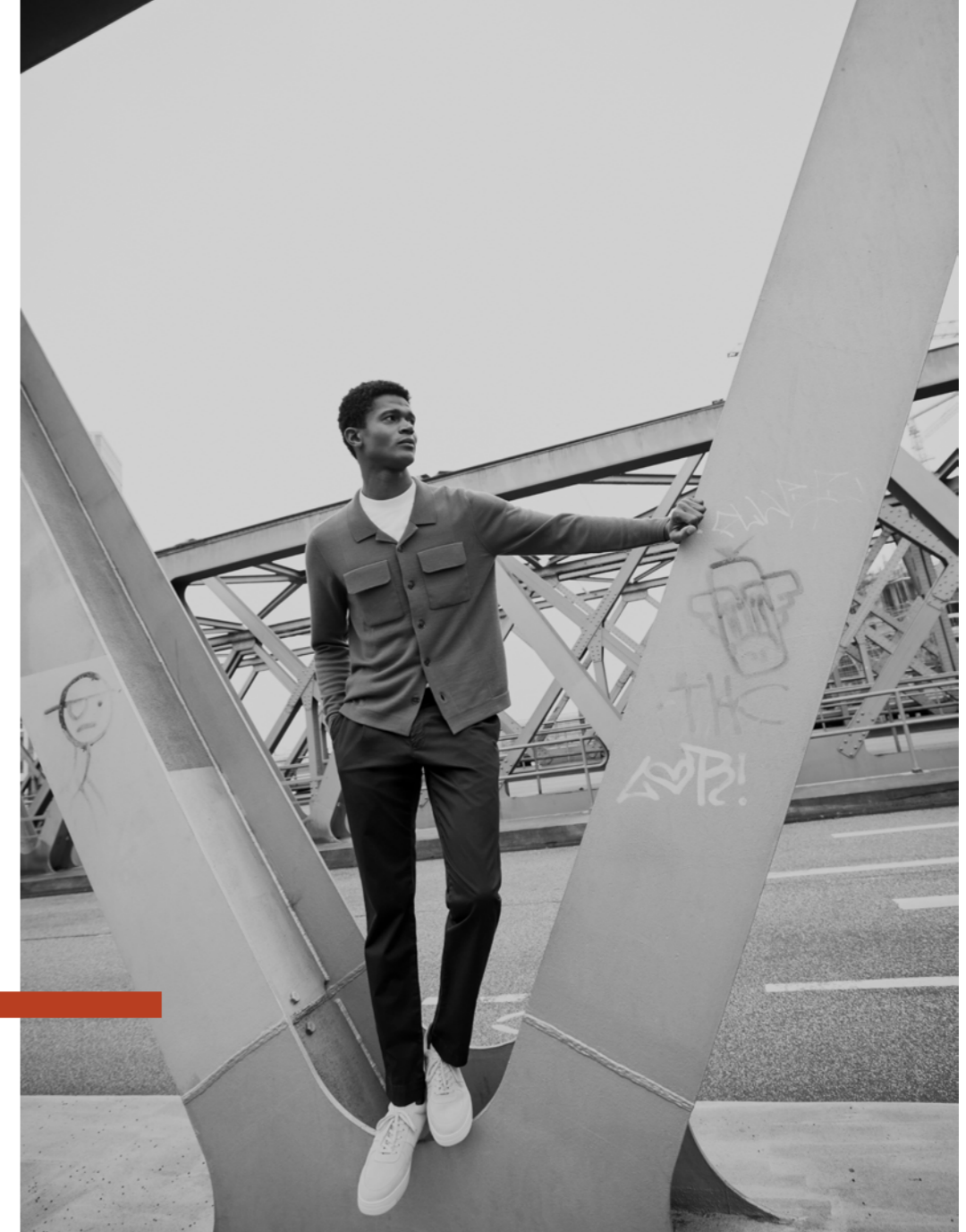
INTO A NEW --- SETUP

fall / winter

23



**smart
casual**



Outerwear 1903-A401, Knitwear 1862-A801,
Trousers 1359-A401-952,
Shoes 1681-V290, Hat 1287-A801



fall / winter 23

Jacket 1526-A040-2890,
Trousers 1370-A001-740







METROPOLITAN CHIC

Everything flows. Everything is constantly transforming. Life is nothing but change, and fashion is just an expression of the steady flux. Our relationship with fashion is changing as well. We have different demands and we value other aspects today than we did yesterday. This is the mindset ROY ROBSON champions with its Fall/Winter 2023 collection 'Into A New Set Up.' Appreciation is at the heart of this collection – the appreciation of materials, of production, of the product itself.

We have created incredibly versatile looks. Smart-casual styles that can be transformed in any way, for formal or business events, for casual affairs – and for everything in between. The suit becomes a reliable companion in all settings, styled depending on the situation: with a shirt or a t-shirt, with a turtleneck or a chunky knit top, with a crewneck sweater or a hoodie ...

This is what we mean by 'The New Versatility.'

fall / winter 23

**The new versatility:
smart-casual styles
that adapt to
every situation**

Jacket I121-A410-2282, Knitwear I875-A401,
Jersey D-4030-A100



PORTRAIT OF A CITY



How do we express appreciation for products? By using them often, and enjoying doing so.
 This is made possible by the great compatibility of the Fall/Winter 2023 items.
 New materials and contemporary cuts are key. And the smart use of colour.
 We have combined neutral tones like Brilliant White and the dark navy shade Sky Captain with
 accent colours like Burnt Brick and Blue Lolite to create highlights for grey days.

fall / winter 23



Jacket 1104-H401-3302, Trousers 1104-H401-392,
 Knitwear 1855-A401, Coat 1981-A450

2

**By combining
neutral shades
with accent colours
we create highlights
for grey days**





fall / winter 23



Jacket 1113-1060-1052, Trousers 1113-1060-140,
Knitwear 1851-A801





indoor



outdoor



nordic



fall / winter 23

urban



Outerwear 1905-A270, Jacket 1118-H240-2172,
Trousers 1118-H240-242, Knitwear 1854-A220, Shoes 1681-V201

The change in patterns and cuts is subtle, yet remarkable. Everything becomes more relaxed, and more casual, without losing any attention to detail. Wider pant silhouettes provide more freedom of movement, as do more flexible materials. The double-breasted suit in particular has continued to evolve. With a wide peaked lapel and flap pockets, this suit is the ideal companion for a contemporary look.

3

**Level up: rich colours
and quality materials
transform casual outfits
into smart-casual looks**

fall / winter 23





Outerwear 1914-A420, Trousers 1350-A220-965,
Knitwear 1871-A420, Jersey 1830-A420, Shoes 1862-W127

4

Everything becomes
more relaxed, more
casual, without losing
any attention to detail



fall / winter 23



Trousers I363-B260-964, Jersey D4030-A100,
Hat I288-A801, Shoes I682-W127



Jacket 1501-A260-2782, Trousers 1361-A301-963,
Knitwear 1884-A290, Shoes 1681-V020





STAY CLASSY & WARM

The change of seasons is a transformation.

It gets colder and we need more layers to protect us.

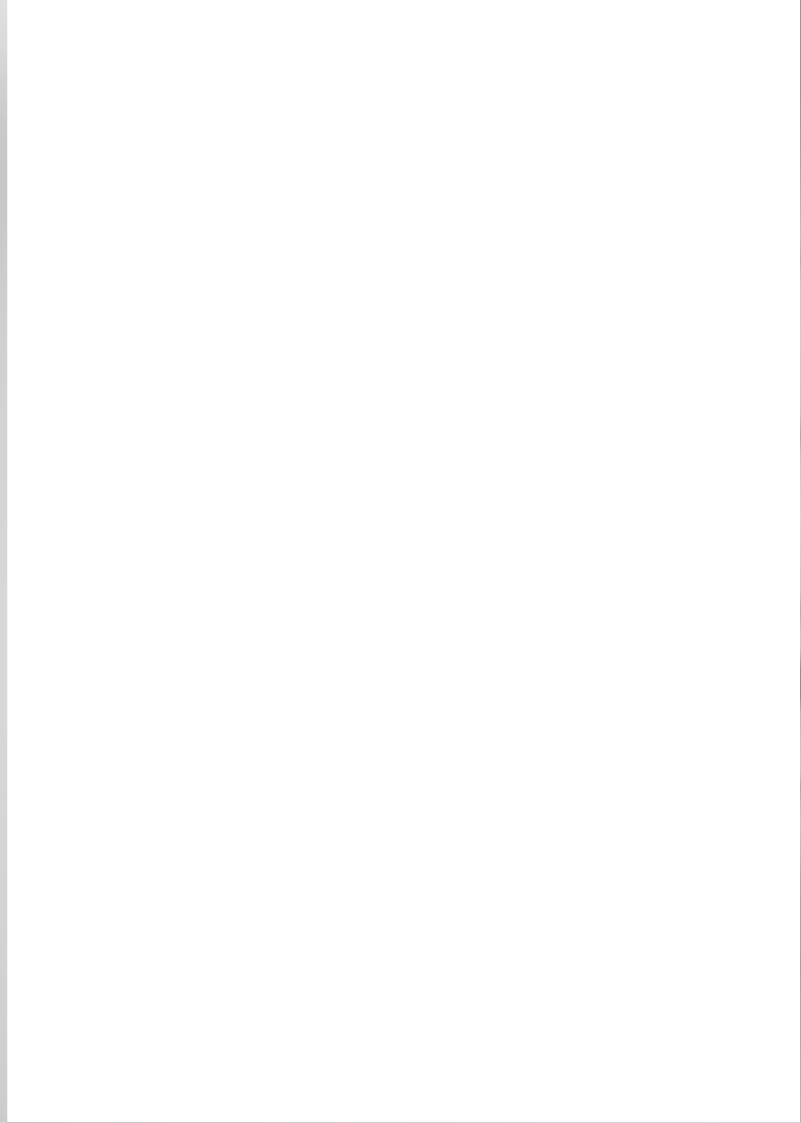
This collection offers smart solutions for fall and winter – and for the transition period. Along with knit sweaters and turtle necks, it's the protective must-haves that stand out: the double-breasted coat with pepita patterning, the 2-in-1 jackets with hoods, or the simple single-breasted coats keep you warm and well-dressed throughout the cold months.

The outerwear comes in a variety of colours. Restrained neutrals for a subtle, chic look and rich colours like Burnt Brick and Blue Lolite as statements against the winter blues.

fall / winter 23



Coat 1980-A240, Trousers 1350-A310-965,
Knitwear 1870-A220, Shoes 1682-W108



fall / winter 23

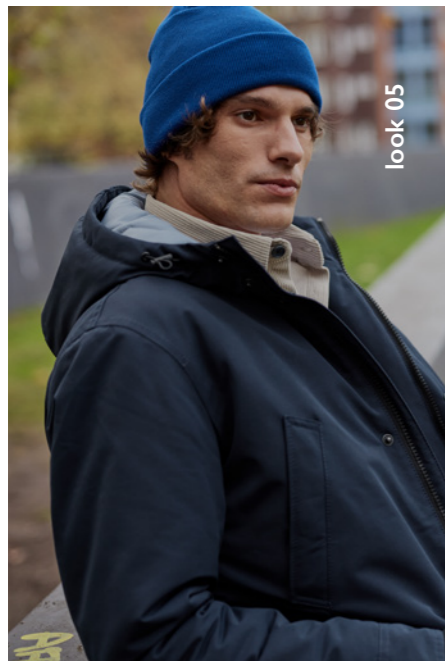
Jacket 1526-A040-2890, Jacket 1513-H030-3382, Trousers 1370-A001-740,
Knitwear 1863-A060, Knitwear D4054-A001



OVERVIEW — LOOKS



IT'S COLD — OUTSIDE



**EXPLORE
our inspirational
looks in our
DIGITAL SHOWROOM!**

STEP INTO



fall / winter

23